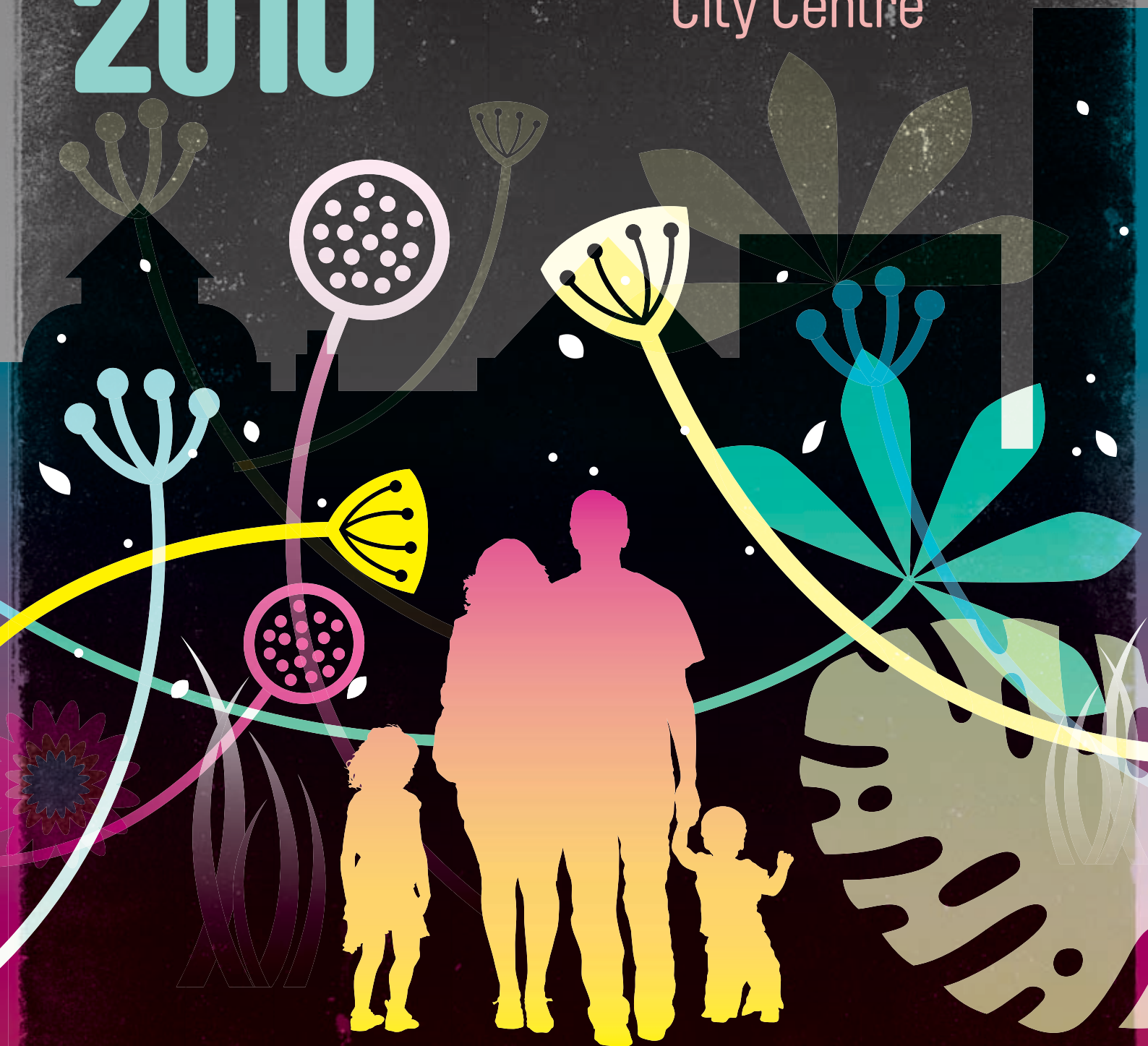


SHINE 2010

The Urban Garden
22-31 January
Sunderland
City Centre



EDUCATION PACK

Between 22nd and 31st January 2010, the City of Sunderland will be seen in a new light as part of the dazzling SHINE 2010: Urban Garden arts festival. The exciting FREE festival will transform venues and spaces across Sunderland, including Mowbray Park and Sunnyside Gardens. Dramatic lighting installations will be in place around the city centre and giant art will be projected onto buildings and pavements – all of the artists are contemporary artists.

This is a contemporary art festival and includes works of art called installations.

Contemporary art means that the art belongs to the present day. A contemporary artist is an artist who is alive today and who makes works of art to be shown in galleries and public spaces at the moment.

In installation art, the artist creates a single piece of work in a given or chosen space. This can be in a building, outside a building, in the sky, in the countryside; in the sea....there are no limits!

They have to think about where the art is placed, how you will see it, hear it and experience it. It is a very special kind of art making. Sometimes the audience have to participate in the work. Sometimes they can just sit and watch and experience the art. Installations often ask us to use multiple senses when experiencing the art: sight, smell, touch, and hearing

Some contemporary art is also called conceptual art.

In conceptual art, the artist will focus on what their work is about, as well as how it is experienced by other people. The artist concentrates on how best to explain their ideas (or concepts) to the viewer by using visual clues. Conceptual art can be in many forms, it could be a video, performance, words, and photos.

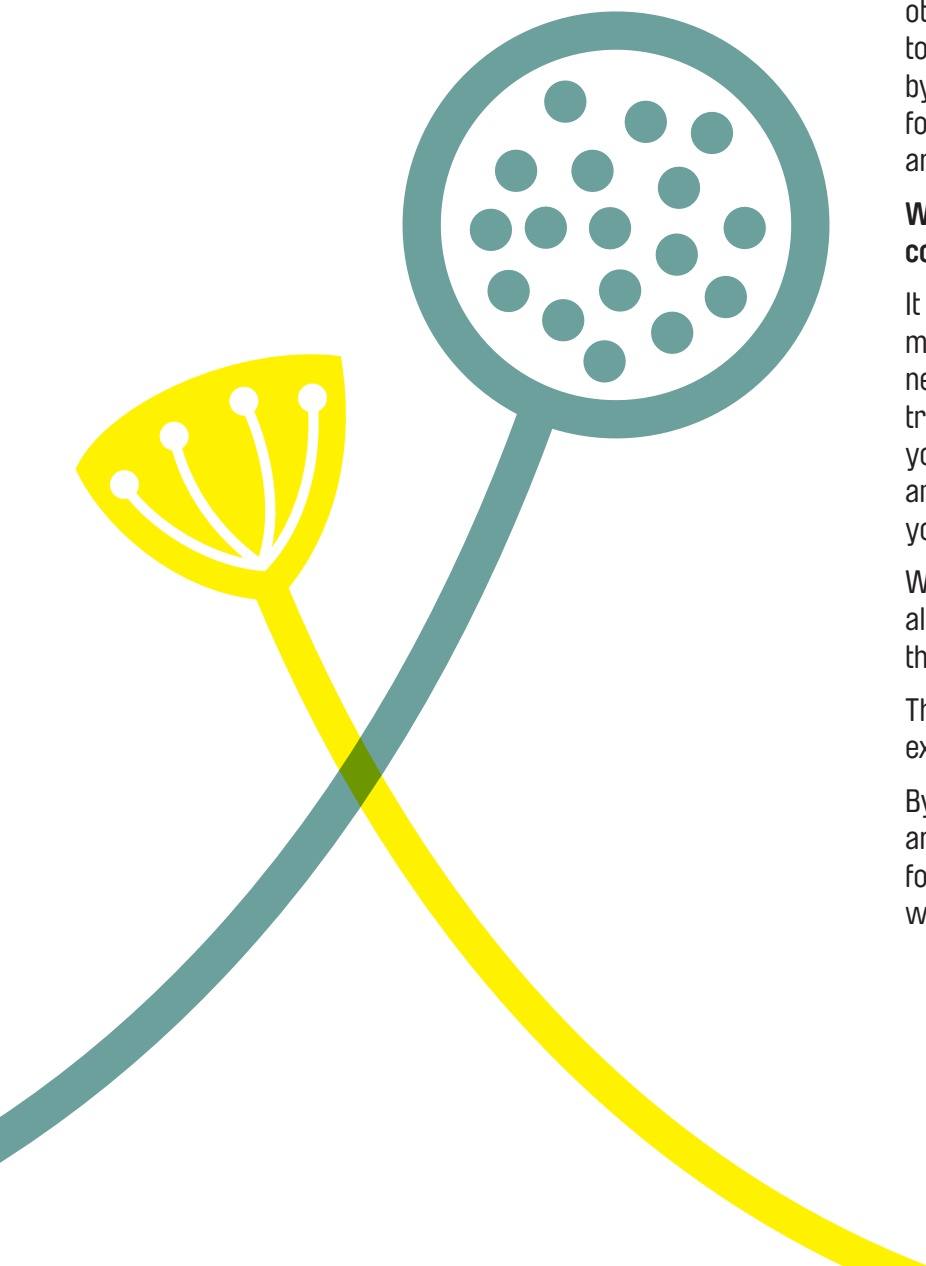
What is the best way to approach contemporary art?

It is very important that you have an open mind. This means that it is important that you are prepared for new experiences and new knowledge. You shouldn't try to form an opinion in the first few moments that you see the Art; you need to take time to consider the art. In the installation pieces you will need to use your different senses.

When you start to experience the Art, you may have already found out some information about it before the visit. The installation pieces will have a title.

The title will give you a clue as to what the art exhibition is all about.

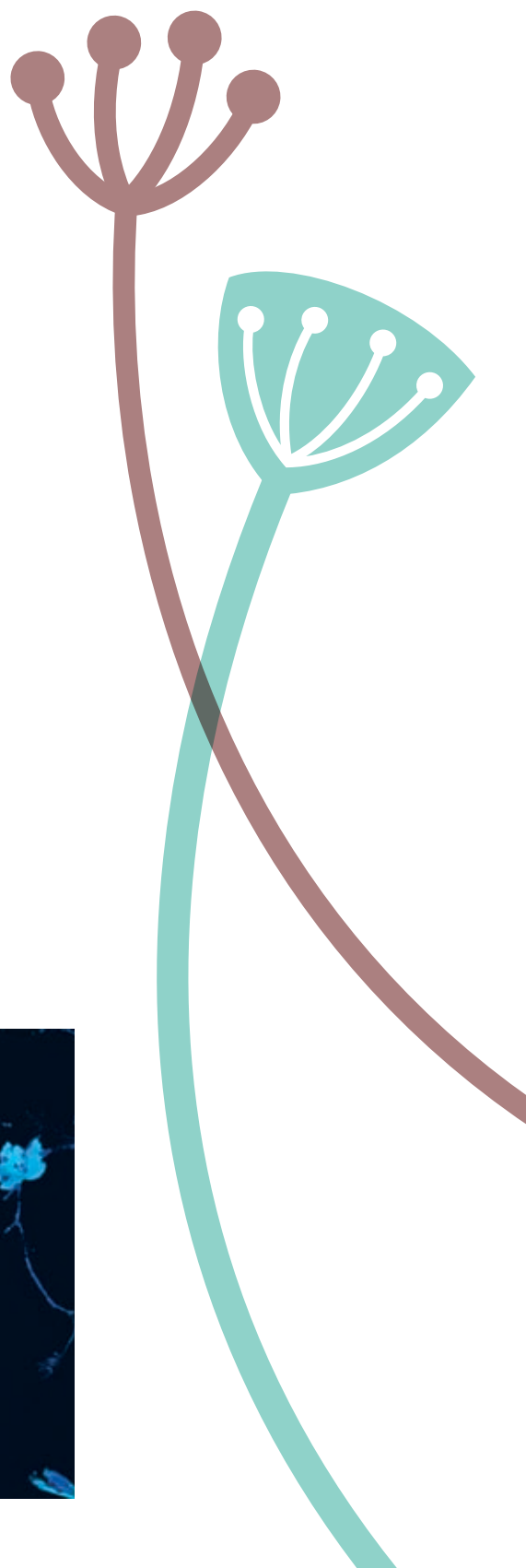
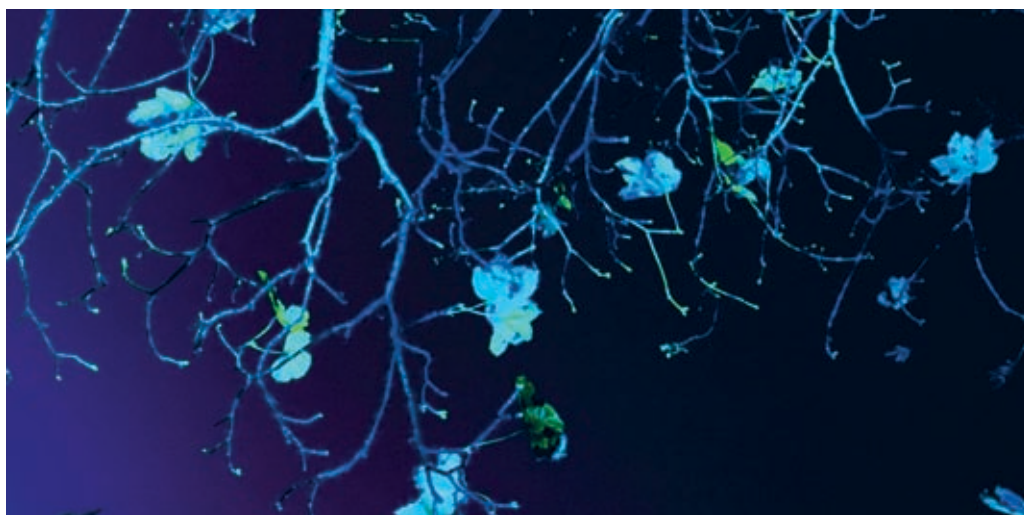
By investigating, looking, questioning, discussing, and thinking – you will be doing what the artist hoped for, you will be looking for the meaning behind the art work as well as the art work itself.



Hi-Lights Interior of Sunderland Museum & Winter Gardens.

This installation work uses the background of the Winter Gardens and its great collection of over 2,000 flowers and plants. During the day, there is a lot of natural light coming in through the windows and the roof. But, during the exhibition time the space will change. If you are outside looking across you will see the giant dome lit up with hundreds of LEDs (light-emitting diodes). In darkness, light attracts people.

At the start you will experience darkness and then hear a noise followed by a light and then by other lights which encourage you to follow them. As you move, lights and noises change, is it them or, is it you that causes the change? You will need to think about this as you move around the spaces. There will be more lights above you, changing colours, and then lights will lead you to the staircase. As you climb up, the noises get louder, now they seem to be beneath you. The lights seem to be moving. Keep watching the trees below you; see how the light is working its way around them. Watch how the lights go brighter and then dimmer, watch how the trees and plants look in the light. Listen. Watch. Think.



Hi-Lights Interior of Sunderland
Museum & Winter Gardens.

Activity:

What is this art work called?

Write down or say ten words which describe your visual (what you saw)
experience in the installation?

1	6
2	7
3	8
4	9
5	10

Write down or say five words which describe your aural (what you heard)
experience in the installation?

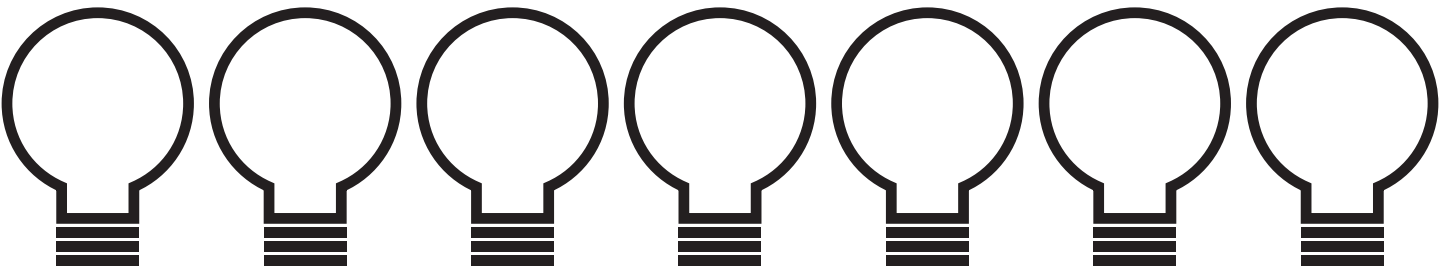
1	4
2	5
3	

Write down or say five words which describe your emotions and feelings
that you experienced in the installation?

1	4
2	5
3	

What colours did you see?

or, if you prefer, fill these shapes with the colours you saw:



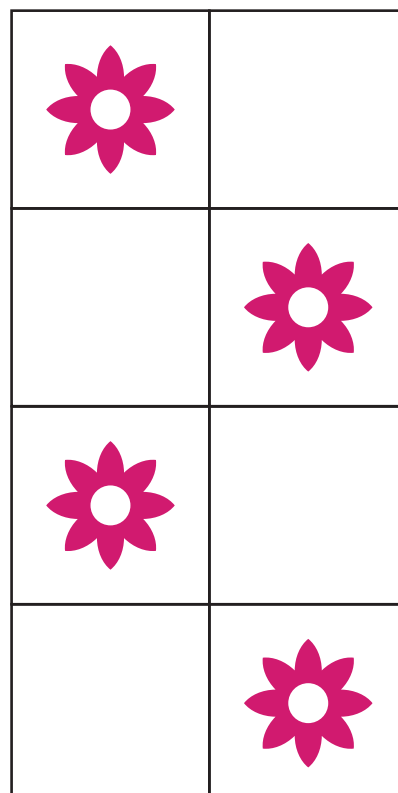
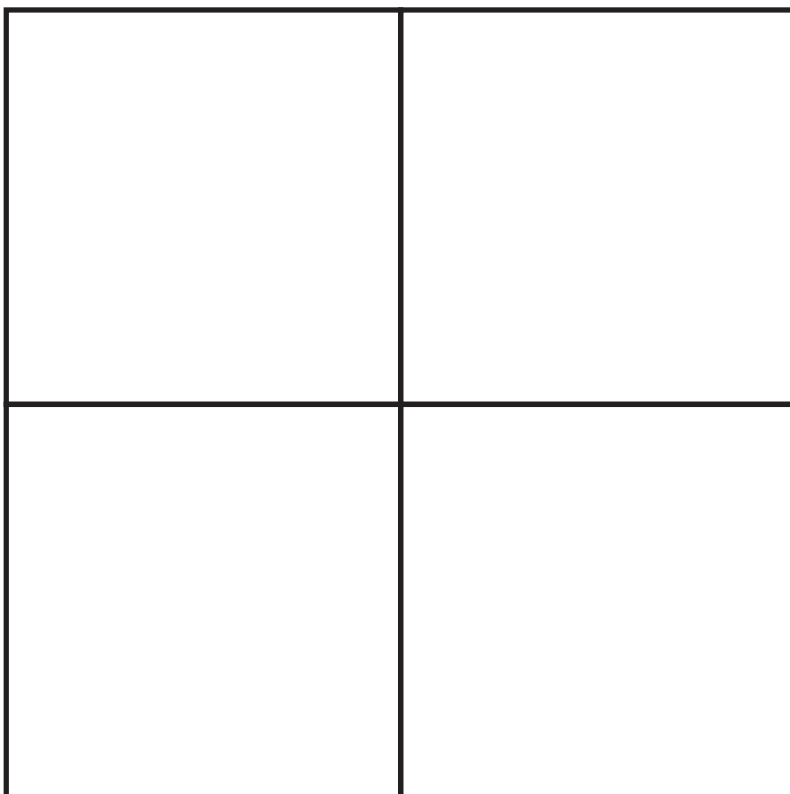
Andrew Richardson

Andrew is a computational designer (he uses a computer to create designs) and mixes science and art in his work.

Andrew's design will be projected onto the outside of the Sunderland Museum & Winter Gardens. It is called "Wallflowers". The shapes of the flowers are inspired by the designs of a great designer called William Morris. He was famous for lots of things including wallpaper design. Wallpaper is made with repeated shapes and patterns but they are still and static. In this installation, those shapes move and change with the movement around them, so the viewer affects the art work. You make the work interactive.

Activity:

Use these squares to draw the outline of one of the flower shapes you see, and then repeat the drawing (you could use tracing paper). There is a small example to see on this page. You could reverse the image and play with the shapes in lots of different ways. You could also create a card template and draw around that shape to create the wallpaper design.



Daniel Brown

Daniel Brown is a multi media designer, programmer and artist, specializing in the fields of Creative Digital Technology and Interactive Design and Applied Arts. He has been acknowledged as a pioneer in the new media field. Born in Liverpool; Daniel became interested in using digital media through his childhood use of video games and his father's interest in computers.

Daniel's work involves the viewer; he wants to make you respond in some way through looking at and experiencing his visual images. He has a desire to let his work portray emotion, beauty and aesthetics. Daniel wants you to be entertained by his work, his recent work is inspired by nature and natural forms. You can find out more about the artist at: www.danielbrowns.com

Daniel has called his installation work "Tropic of Sunderland" and it will be projected onto the building of the Wilkinson shop.

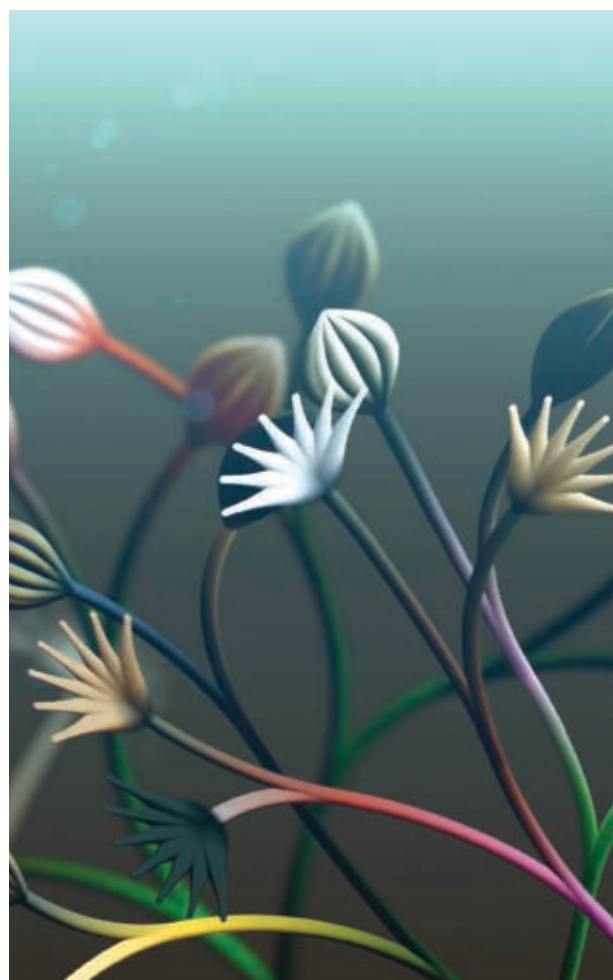
This animation is permanently installed in the plant room at the back of the Sunderland Aquatic centre. You can see photos of this at: <http://www.flickr.com/photos/play-create/4106535682/>

The artwork will move as you watch it, the shapes will change and evolve, the plants will grow and flower and the whole image seems to be underwater.

Activity:

Spend time watching this and see if you can describe the changes by working with a partner and talking about the work. Here are some points to help your discussion.

- Do you both see the same things or do you see things differently?
- Do you hear any sounds in your head when you watch the art work? Can you describe them?
- Do you think the imaginary place where the plants grow is warm or cold? Give reasons for your answer.
- Do you think there are lots of colours used, or do you think there is a set range of colours?
- Can you come up with some different ideas for the title of the work? What are they?
- Does the installation change the building by being projected onto it?
- Is this a good thing? Give reasons for your answer.
- If you could set a piece of music to the installation, do you have some ideas about what you would choose and why?



Daniel Brown

If you had to send a postcard to Daniel saying what you have enjoyed about the art work, what would you write on it? Use the template below to write your message.

Daniel Brown

Artist



Susan Bulley, Andrew Mitchell, Neil Armstrong, Lee Maven

Susan Bulley, Andrew Mitchell, Neil Armstrong, and Lee Maven all have their installation art work in the ground floor windows of the City Library and Arts Centre.

There are four different pieces of art work here so take your time looking and thinking.

Susan Bulley

Susan's work is very interesting because it is about the way that we try to turn our outside spaces into inside spaces. When we build gardens with patios and decking and furniture, we are trying to take the inside of our homes into the outside space around our homes. People even have heating outside as well as lights, so that there is no notion of night time and the coldness and darkness that it brings.

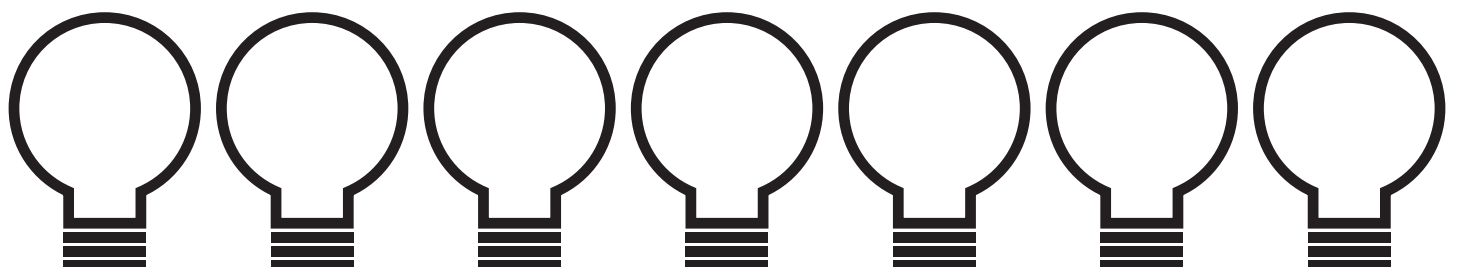
Susan's work is using light to give us the message that no matter how hard we try, nature cannot be controlled. We are very aware of this nowadays, with recent storms and floods and deep snow which are all part of nature and which we don't like because it affects our lifestyles and stops us being "in charge".

Activity:

What is the deckchair made from?

How many different colours can you see in the lighting used in this installation?

You can write them down or colour in the shapes below.



Susan Bulley

What object, representing nature, can you see on the decking?

If you could choose a different (single) object, what would it be?

Why would you choose it?

Sketch the leaf in this box:



Andrew Mitchell

Andrew has created an installation which is about the theme “The Urban Garden”. Andrew’s work uses a mixture of materials, including glass, video and light. There is projection of images here, images on digital monitors, which all add up to telling a story. The story is about how humans are involved in creating, looking after and then developing urban gardens. Gardens serve many purposes. They help people to turn land into something beautiful. They can be used to grow fruit and vegetables. They offer an area for children to play in. They encourage local wildlife. They give people access to fresh air and sunshine. They encourage people to mix socially, away from television etc.



Activity:

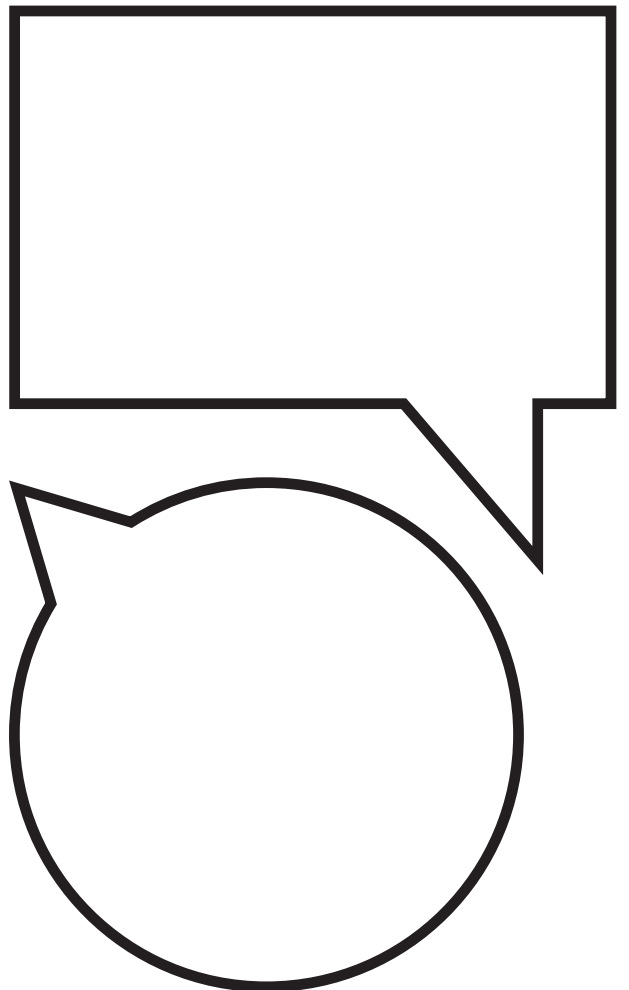
Look carefully at the art work. Look at the images that are projected and seen on the monitors. What is the story?

Work with a partner and try and tell the story using these speech bubbles to help you.



What would be your perfect outdoor space?

What would you like in your ideal garden?



What would be your perfect outdoor space?

What would you like in your ideal garden?

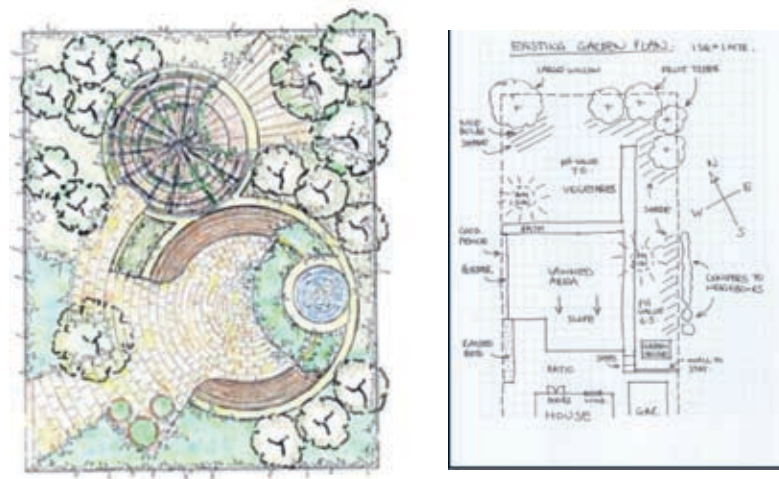
[illegible]

Below are some sketches of a garden (bird's eye view).

Can you design a 21st century garden?

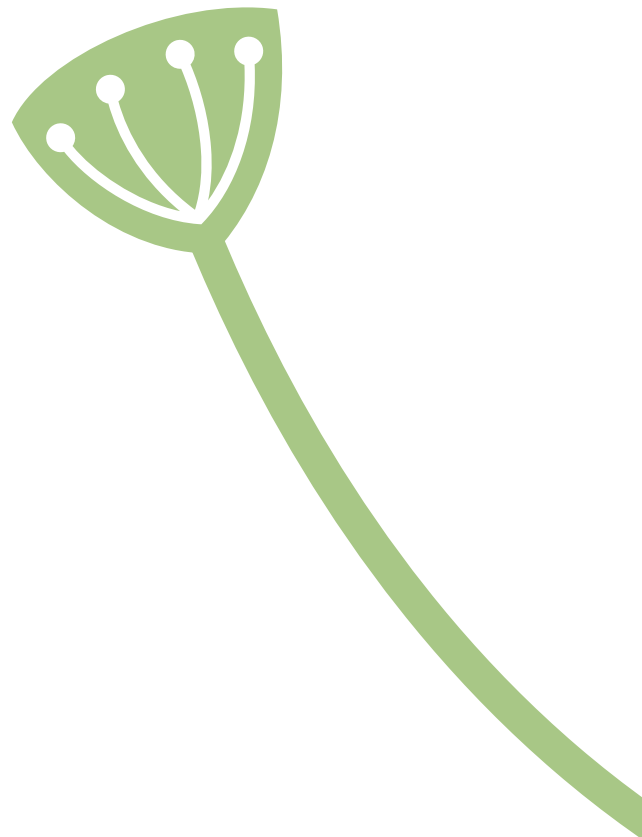
Look at the list below to help you.

Use a piece of A4 paper to do this. Maybe you could create a space for a piece of art work in the garden? An installation or a piece of sculpture perhaps?



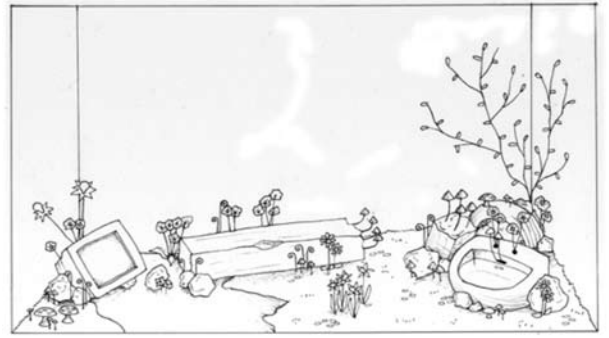
Suggestions for a 21st century garden
(ecologically friendly):

- Composting and recycling household and garden waste.
- Growing organic fruit/vegetables.
- Encouraging wildlife, especially bees and butterflies.
- Water collection and re-using.
- Alternative energy (for example, solar powered).
- Outside cooking and eating.
- Using natural materials for building.
- Encouraging people to spend time outside.
- Personal well being



Neil Armstrong

Neil's art work is about the relationship that exists between our modern society, the human species and the natural world. Humans find an area to inhabit (live in) and create their personal spaces which develop into bigger spaces, such as streets, housing estates, shopping areas, towns and villages. When they move on, they often leave traces of their lives, forgotten objects which once had a lot of meaning, and which once had importance and value. These objects tell a story of the people(s) who once owned them. If you left an old doll in a garden and moved away and the land became derelict, the doll would become part of the natural world, weeds and grass would continue to grow around it, through it etc. If you saw it again it would still hold memories for you.



What objects do you see?

Sketch some of them in the boxes:

--	--	--



Lee Maven

A third of all we eat, and much of what we wear, relies on pollination by bees, yet they are dying in all corners of the world at a devastating rate.

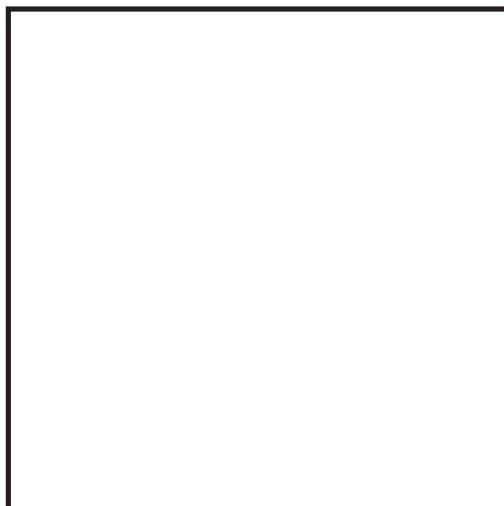
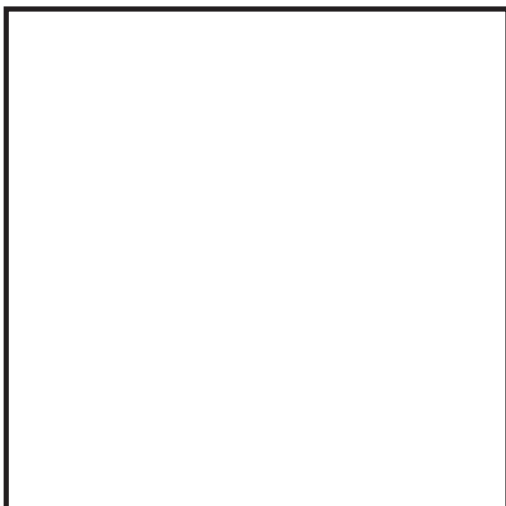
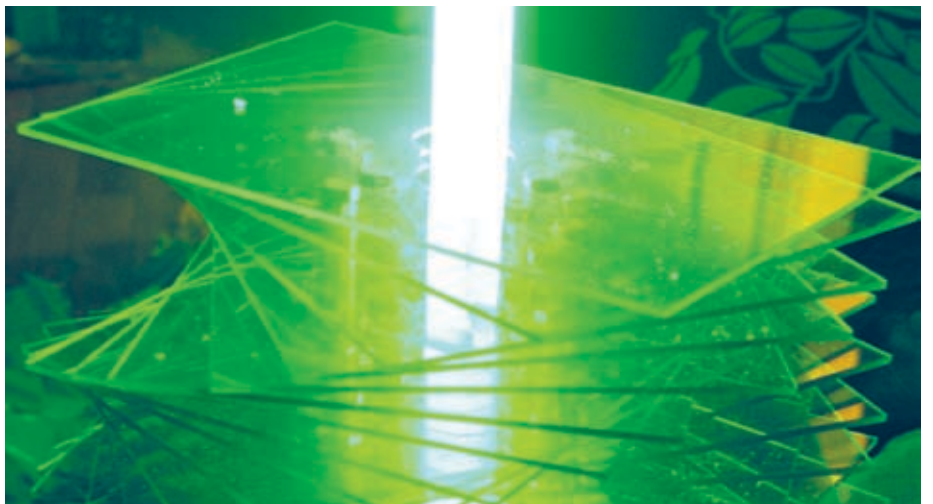
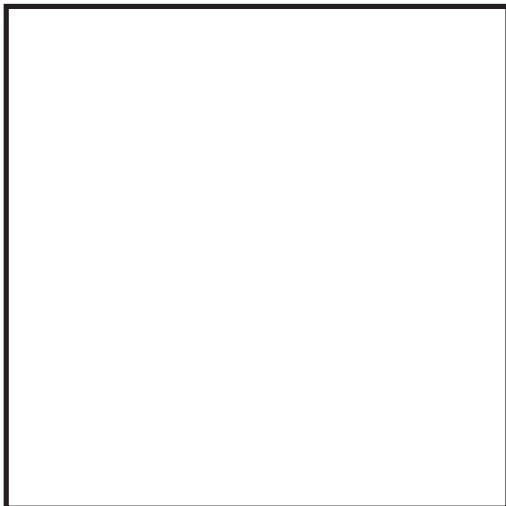
Scientists remain puzzled as to why this is happening but it is. Bees live in beehives (nests) which they find in nature and also in manmade beehives where they are domesticated and looked after by people who keep bees to make honey and to pollinate crops.

Lee's installation shows the creation of three beehives, made from layers of brightly coloured Perspex. These are lit by ultraviolet rods and create a very fragile and unnatural interpretation of bees who are continually threatened by an environment which is changing all the time.

Lee's work shows us a futuristic habitat (place to live) and shows us how life would be different for us all without the bees.

Activity

Look closely at the art work. Use the boxes below to sketch the shapes of the beehives and include the different layers of Perspex in the sketch.



What do you think is killing off the world’s bee colonies?

Give reasons for your answer here:

What would happen to the world if we didn’t have bees?

What should we do about this problem?

In the ideal world, bees would flourish and continue to do their work. Can you create a design for a futuristic beehive which would protect the bees from the threats of the environment?

Use A4 paper to come up with a mind map of ideas and some sketches, and then develop a design as a drawing or as a paper sculpture.

Does the art work help us to focus on the problem?

**Northern Gallery for Contemporary Art
City Library and Arts Centre:
Giuseppe Davies.**

Giuseppe's installation is called 'Vie'. It can also be seen on Youtube at www.youtube.com/user/Eeky2008

This installation is interactive and requires the viewer(s) to take part in its action. It is about sound and colour. The colour and light are fluid. It cleverly works out what colours you are wearing and this also affects the colours on the screen. Because it has infra red sensors built into the design we can use our hands on the screen to control the flow of the colour and the shapes. It becomes like liquid and allows us to play with this in a fun and creative way.

You really do need to spend time interacting with this art work.



Activity

Use these prompts to help you discuss the art work with another person (or in a small group).

Try using one hand and then two hands.
What is the difference?

Move your hand quickly.
Move your hand slowly.
What is the difference?

What shapes can you see?
Can you control the size of them or
make them bigger or smaller?
How did you do this?

What happens if you don't touch it for a while?

What colours can you see as you move the shapes?

What happens if a small group interact with the installation at the same time?

What are the sounds like?

How does your movement change the sounds?



Northern Gallery for Contemporary Art
City Library and Arts Centre:
Giuseppe Davies.

Ten words to describe the artwork?

1	6
2	7
3	8
4	9
5	10

Ten words to describe how you feel when interacting with
the artwork?

1	6
2	7
3	8
4	9
5	10



Suzie Brown: Sunderland Museum & Winter Gardens and Tourist Information centre, plus other locations.

Suzie likes to draw natural shapes and uses these in her illustrations and designs for the objects that she makes. Light and colour and how public and visual environments can be enhanced to make life more pleasurable and interesting motivate Suzie. Suzie has a political conscience and a love for the environment and outdoors. Suzie has always had an interest in the application of technologies to the artistic process, so currently her works evolve digitally.

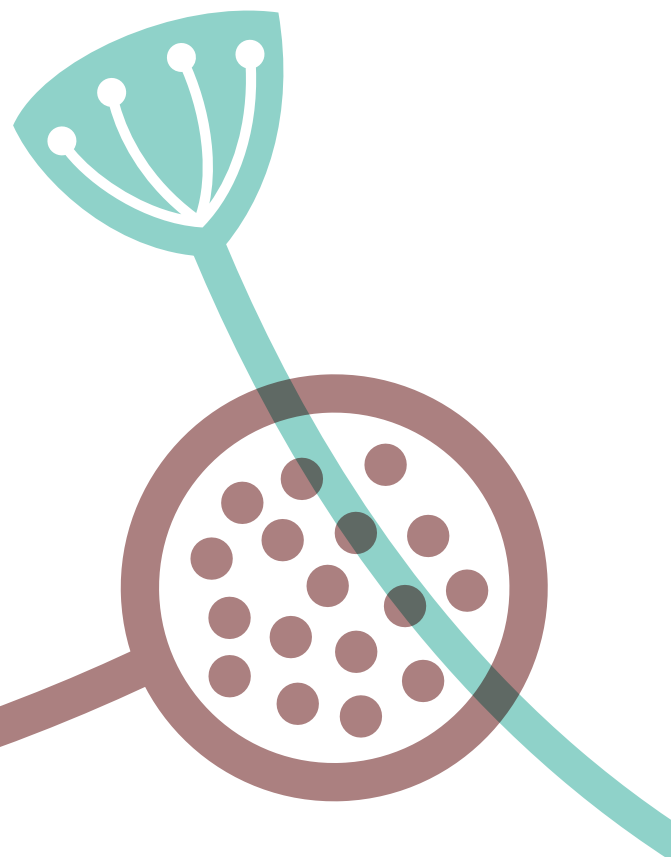
Here is what Suzie has to say about environmental living...

“The visual environment is very important to me so contributing to creating pleasing habitats and surroundings for people to spend time in and supporting them as they go about their daily lives is one of my reasons for being involved in design.

I love illumination — the illumination of a subject or set of concerns, the illumination of colours in dark environments. The potential to light a window, or building or street, with something more magical than the ordinary, so that people can enjoy the experience on their way home from work or on their way out.”

Often, in towns and cities, we are attracted to light and well lit areas and we avoid going down dark streets and places. Suzie’s pillars of light are designed to make you feel happy, to enjoy the shapes and the colours and to want to follow a path that the pillars lead you to.

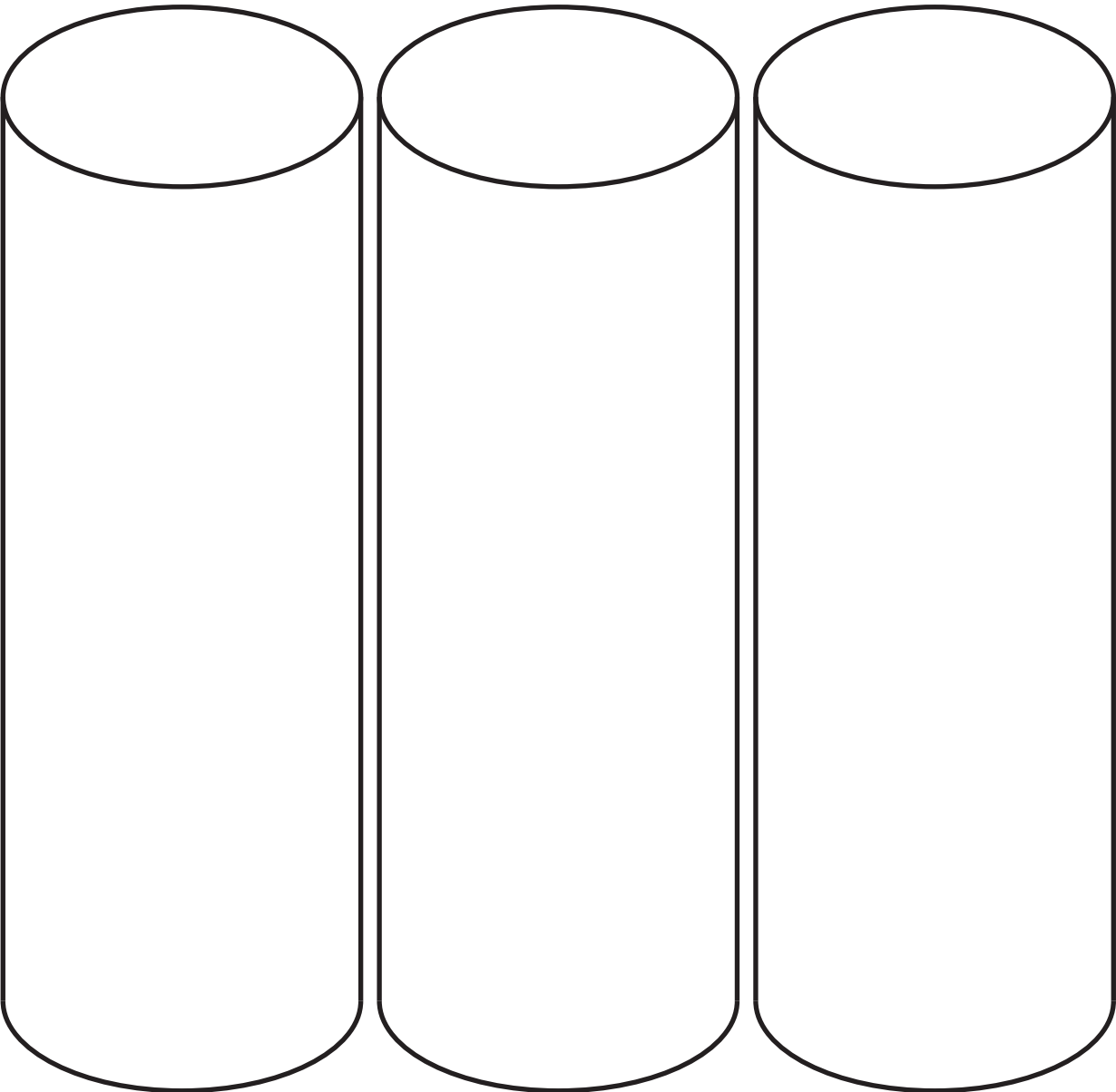
See more of her work at: www.urbanbird.co.uk



**Suzie Brown: Sunderland Museum & Winter
Gardens and Tourist Information centre,
plus other locations.**


The pillars all have different designs and imagery on them.
What different things can you see?


Use the shapes below to sketch
part of the designs that you see:



Suzie Brown: Sunderland Museum & Winter Gardens and Tourist Information centre, plus other locations.

What do you think about Suzie’s work?
Write some comments in the speech bubbles





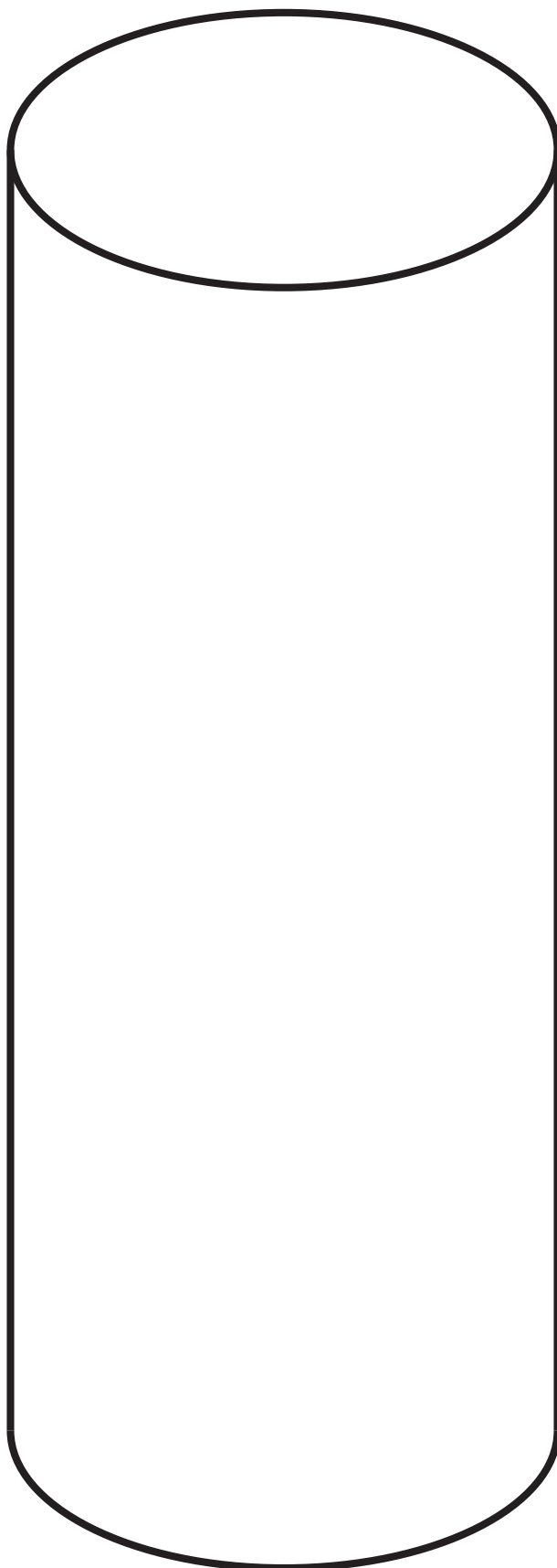
Can you think of a dark area in your town or street where you would like to place a pillar of light?

What difference would it make to the area?

What colours would you like in it?

**Suzie Brown: Sunderland Museum & Winter
Gardens and Tourist Information centre,
plus other locations.**

Experiment with a design/pattern in the shape below, which
would suit your pillar of light. Remember that Suzie's designs
are inspired by natural forms and shapes.



Cinetaxis: Pilgrim Pub Fawcett Street (and other buildings)

SDNA are digital artists. They are called Valentina and Ben. They make art together which uses visual and audio art forms, these range from installations and performance to interactive architectural and large scale digital projections. Their work has been seen as part of art displays, musical productions, fashion labels and many other contexts.

Visit their web page at www.sdna.tv or www.myspace.com/sdna to see the exciting range of art work that they produce.

Cinetaxis is the name of the artwork and it has previously been seen in Croatia and in London. It came about after research on how insects react to light sources and the artist's desire to see if humans are also attracted to light. You will probably have seen a moth when it is attracted to a light or a candle flame. This is because of something called Photo taxis, it is an automatic movement towards light.


Scientists are not sure why it happens but it does. The projected images in Cinetaxis are both beautiful and frightening. The scale changes the way we look at the insects too, they become bigger and we notice much more. The shape of the insect against a light becomes a silhouette and this is a very powerful image.



Cinetaxis: Pilgrim Pub Fawcett Street
(and other buildings)

Activity

This is a silhouette of a moth (below), use the other boxes to sketch and then colour in silhouette shapes that you see in the art work Cinetaxis

Are human images part of the art work?

What are they doing?

Cinetaxis: Pilgrim Pub Fawcett Street (and other buildings)

What does this piece of art work make you feel like?

If you could ask the artists three questions about the art work, what would they be?

1

2

3

Is sound important to this installation?

What can you hear?

Cinetaxis: Pilgrim Pub Fawcett Street (and other buildings)

Work with a partner and come up with a 120 word review of the installation to be published in the local newspaper.

[illegible]

Sunnyside Gardens: The Hive

The artists are called KMA. KMA is a collaboration between UK media artists Kit Monkman and Tom Wexler. Their work is about illuminating, encouraging, and developing, interactions between people in public spaces using projected light.

KMA want to use the light to highlight people, and their relationships rather than just to highlight a building or piece of architecture. They reject the belief that people in the street are just passing by and want to fully involve them in their art work. The projection will make people stop and look around and behave in particular ways in relation to the work.

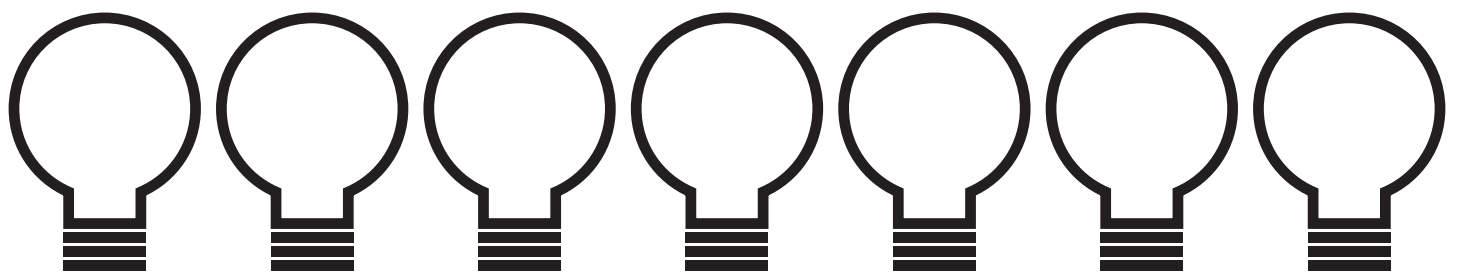
The projection is set to music by the modern composer Philip Glass (from his 1989 opera '1000 aeroplanes on the roof'). It imagines a series of extra terrestrial (from outside of this world) encounters. The work is generated by the curiosity of visitors: at times, swarms of tiny insect-like creatures fly through the space and swarm around the audience, weaving and flowing across the stage. When you become a part of the art work you will find yourself moving in unexpected ways and in relation to the images and lights and also to the people around you.



Activity

Experience the projection by yourself, to begin with, and then with others in your class or group.

Record some of the colours used in the artwork here:



Sunniside Gardens: The Hive

Use these boxes to sketch some of the shapes you saw being projected:

Think about how you moved in the space where the projection was. It is almost like a dance. Can you “draw” lines which show your movement? Use different colours for this, perhaps one colour for when you moved in a straight line but another colour where you might have moved in a circle. You could use a thicker line to show when you moved slowly, and maybe a thinner and broken line where you moved quickly.

Use the next page to show your linear drawing

Sunniside Gardens: The Hive

My linear drawing of my movements in
'The Hive' installation.



Sunniside Gardens: The Hive

How did the music affect the installation?

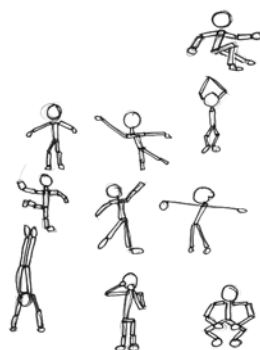
Would it be different without the music?

Can you give reasons for your answer?

Sunnyside Gardens: The Hive

How did people respond to the installation?

Sketch some of the people and their movements, sketch simply, use matchstick shapes if you want, but give a visual idea of the way they moved about...



**First floor window at The Place,
Athenaeum Street Sunderland:
Kathryn Hodgkinson 'In This Day and That Age'**

Kathryn is an artist who works with glass and ceramics. Sunderland is famous for its use of glass and ceramics in the past and currently. Kathryn was commissioned by Sunderland City Council to transform the glass shutters into a work of art.

Each shutter contains a different reference to Sunniside and the surrounding area, including architectural detail from some of its Georgian buildings. The louvres pivot individually to follow the sun as it moves through the sky and are used to shade glare into the inside of the building. (A louvre is a blind or shutter that can be angled to let light into a building). Comprising over a thousand layers of imagery, the designs become more apparent as the louvres rotate throughout the day and are illuminated through the night.

The designs celebrate the history and the character of Sunniside which is an area of regeneration in Sunderland.

It celebrates the past and the present and it looks to the future. Children's building blocks are used to create a playful new city. The drawings of the architectural details, which are from the old Sunniside buildings, have been twisted, turned, overlaid and repeated. The old has been taken to create something new and modern.

There are also shapes and patterns which link to the glass and ceramic designs which are associated with Sunderland and which you can see examples of in the Sunderland Museum and Winter Gardens.



Activity

You really need to walk around and look at the panels.
Look closely and then walk further away to see them.
You will see shapes and patterns and you will see image
that you recognise. Use these spaces to sketch some
of the patterns that you see.

First floor window at The Place, Athenaeum Street Sunderland: Kathryn Hodgkinson 'In This Day and That Age'

Use these shapes to sketch some of the images that you see and recognise:

--	--	--

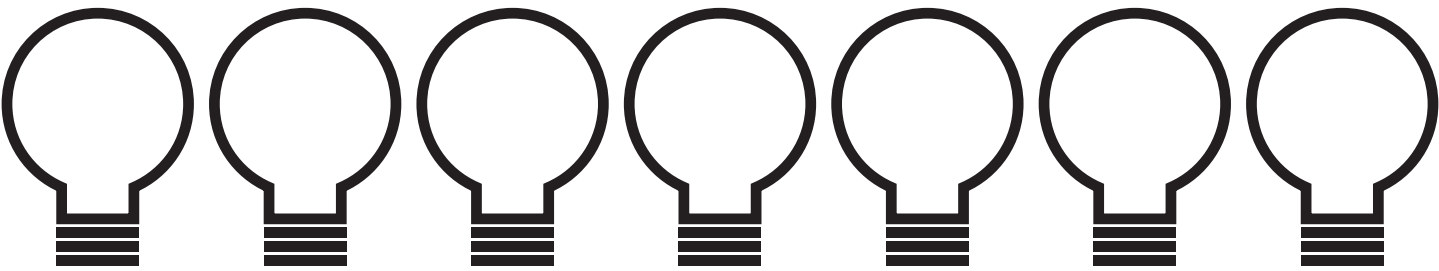
Write a list of all the things that you can see in the panels:

[illegible]

How many panels are there?

First floor window at The Place,
Athenaeum Street Sunderland:
Kathryn Hodgkinson ‘In This Day and That Age’

What are the colours used in the panels?



What do you think “re-generation” means?

How has it improved this area of the city?

**First floor window at The Place,
Athenaeum Street Sunderland:
Kathryn Hodgkinson 'In This Day and That Age'**

If you could design a panel, what would you add to this series of panels?

Ideas:



**First floor window at The Place,
Athenaeum Street Sunderland:
Kathryn Hodgkinson 'In This Day and That Age'**

Now, design the panel!

Use the boxes below to test
out ideas and colours

My design for an extra panel for 'In This Day and That Age'

